

Climbing platforms



ISO 9001

BUREAU VERITAS
Certification

Nº 7002938



Encofrados J. Alsina, S.A.

Pol. Ind. Pla d'en Coll - Camí de la Font Freda, 1
08110 - Montcada i Reixac (Barcelona - Spain)
Tel. (+34) 935 753 000 - Fax (+34) 935 647 059
E-mail: alsina@alsina.com

www.alsina.com

C-160 and C-240 CLIMBING PLATFORMS



► Safe and profitable



The Alsina climbing systems have been designed carefully considering the complete safety of the operator.

They have a work platform that is free of obstructions and a safety railing that is watertight and complete, preventing risky situations during assembly and/or form removal.

► Compatible



Both the c-160 and c-240 climbing systems are completely compatible with the formwork systems for straight and curved walls: Alsiply, Alisply Circular and Vistaform Walls.

→ Safe systems for climbing straight and circular walls

Elements designed to climb the formwork of piles and walls in climbing cycles with concreting heights of 4 and 6 m to be formed with total safety for the operator.

The assembly of the climbing platform and its safety platform can be carried out on the ground, before positioning it on the wall / pile, or by placing the climbing brackets in the anchorage rings and assembling the platform later.

Both systems can be set using either Alisply (straight and circular walls) and Vistaform straight and circular walls also.

Some of the main features and characteristics of the Climbing platforms are:

- 1,6 and 2,4 m wide platforms.
- Platform length for 3 linear meter of formwork.
- Designed to support the different wind loads at any height.
- Platform designed to support 2 kN/m² loads besides the formwork own weight (6 kN)
- Safe and comfortable Lower platform.

▶ c-240 Climbing Platform



The climbing platform C-240 system allows piles and walls of climbing cycles with concreting heights of up to 6 m to be formed with total safety for the worker.

In the c-240, formwork operations are carried out using a shifter car that separates the formwork 75 cm from the wall, allowing the joint movement (without having to remove the formwork) of the platform and the formwork.

▶ c-160 Climbing Platform



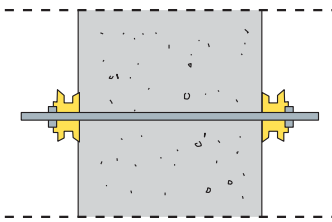
The climbing platform C-160 system allows piles and walls of climbing cycles with concreting heights of up to 4 m to be formed with total safety for the worker.

The c-160 has two assembly possibilities: in the ground or positioning the platform directly on the wall. Its centering system prevents possible deviations in the climbing; its removal is made easily by tilting the climbing assembly (along with the formwork) with a crane.

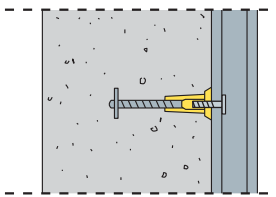
Characteristics and anchorages of the climbing platforms

anchorage systems

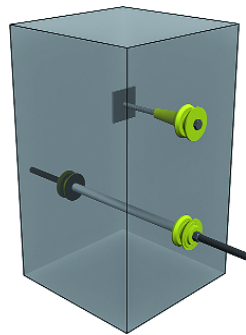
The c-160 and c-240 Climbing platforms have two anchorage systems; these are both compatible for one-sided climbing or for the climbing of double-sided walls.



Climbing with M24 Bar



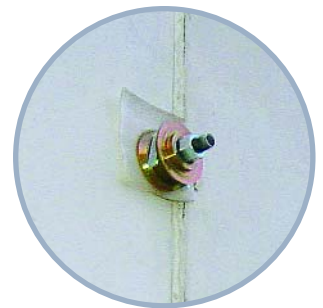
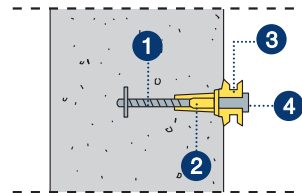
Climbing with Metal Cone



PATENTED

centering ring

The c-160 and c-240 Climbing platforms have a centering system in the first position that allows differences of +/- 8 mm to be absorbed between axes for the later positions.

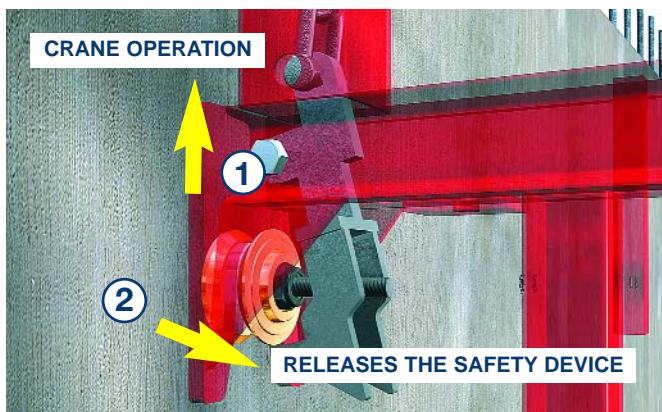


Close-up of the Climbing Centering Ring

- 1- CLIMBING LOST TIE
- 2- DYWIDAG M24 METAL CONE
- 3- D24 CENTERING RING
- 4- M24X80 SCREW

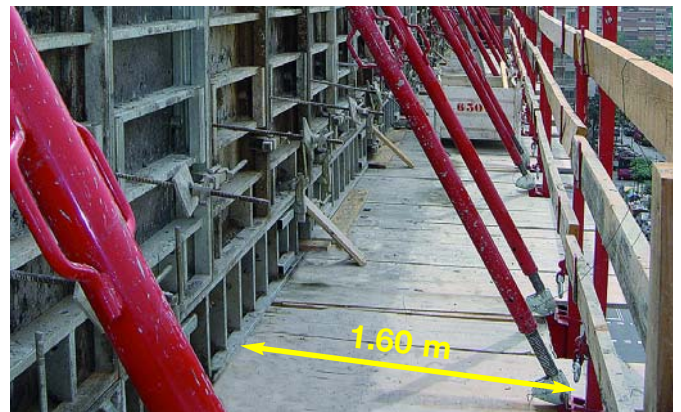
semi-automatic safety device

Both platforms use the systems that allows anchoring of the climbing section using a semi-automatic system; driven by the crane, when it lifts the assembly (1) it releases the safety device in the platform (2).

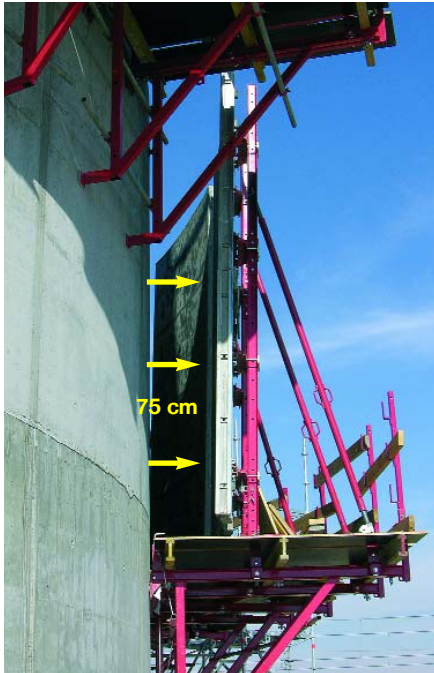


obstacle-free platform

The platform was designed taking into account the safety and the ability of the operator to work easily on it, keeping the floor space completely free of obstructions, such as: beams, platforms, etc.



easy and secure form removal

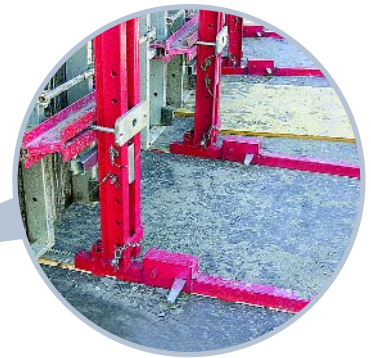


View of the track for the rack and of the shim that secures the overall unit during form removal.



roller-rack carriage

The C-240 Climbing platform has a rack system that allows the panel to be taken out 75 cm from the wall in order to remove the form.



View of the track for the rack and of the shim that secures the overall unit during form removal.

wide platform

The c-240 has a large and safe platform allowing work to be carried out comfortably.



assembly movable with crane



The design of the c-240 platform offers the possibility of transporting the assembly, made up of the climbing platform and the formwork, without having to dismantle it.